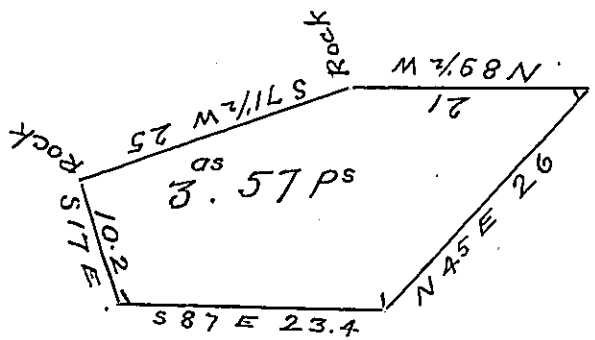


York County shore



Lancaster County shore

A Draught of Shelving rock Island opposite the Widow Cullys land on the eastern shore & the widow Martins on the western shore about twenty five perches from said Widow Cullys land and about twenty five perches from Sand Bar Island, situate in Martie Township Lancaster County Containing three acres and fifty seven perches Strict Measure surveyed in pursuance of a Warrant dated 31<sup>st</sup> of August A. D. 1818 granted to W<sup>m</sup> Cowan & John Sweeny

Jacob Hibshman D.S.

To Jacob Spangler Esq<sup>r</sup> }  
 Surveyor General }

IN TESTIMONY that the above is a copy of the original remaining on file in the Department of Internal Affairs of Pennsylvania, made conformably to an Act of Assembly approved the 16th day of February, 1833, I have hereunto set my Hand and caused the Seal of said Department to be affixed at Harrisburg, this eighteenth day of April 1904.

*George D. Brown*  
 Secretary of Internal Affairs.